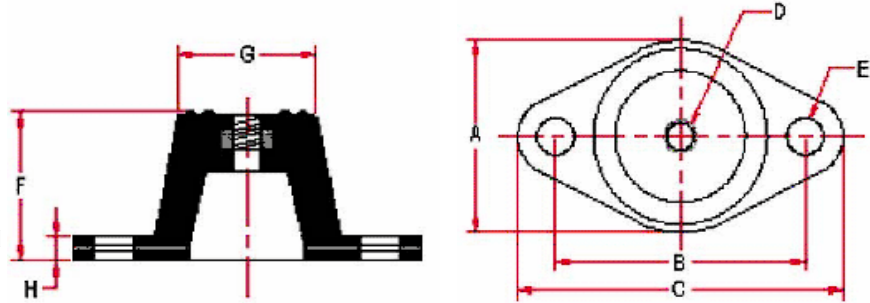




DOUBLE DEFLECTION SERIES ISOLATOR



RPM Part Number	Max Load Deflection		Isolator Dimensions (inches)								Color
	(lbs)	(inches)	A	B	C	D	E	F	G	H	
CM-1-50	50	0.35	1 3/4	2 3/8	3 1/8	1/4	11/32	1 1/4	1 3/8	3/16	Blue
CM-1-75	75	0.35	1 3/4	2 3/8	3 1/8	1/4	11/32	1 1/4	1 3/8	3/16	Red
CM-1-100	100	0.35	1 3/4	2 3/8	3 1/8	1/4	11/32	1 1/4	1 3/8	3/16	Green
CM-1-145	145	0.35	1 3/4	2 3/8	3 1/8	1/4	11/32	1 1/4	1 3/8	3/16	Black
CM-2-130	130	0.4	2 3/8	3	3 7/8	3/8	11/32	1 3/4	1 3/4	7/32	Blue
CM-2-165	165	0.4	2 3/8	3	3 7/8	3/8	11/32	1 3/4	1 3/4	7/32	Red
CM-2-235	235	0.4	2 3/8	3	3 7/8	3/8	11/32	1 3/4	1 3/4	7/32	Green
CM-2-375	375	0.4	2 3/8	3	3 7/8	3/8	11/32	1 3/4	1 3/4	7/32	Black
CM-3-200*	200	0.5	2 3/8	3 1/8	4	3/8	1/2	2	1 3/4	1/4	Blue
CM-3-300*	300	0.5	2 3/8	3 1/8	4	3/8	1/2	2	1 3/4	1/4	Red
CM-3-400*	400	0.5	2 3/8	3 1/8	4	3/8	1/2	2	1 3/4	1/4	Green
CM-3-500*	500	0.5	2 3/8	3 1/8	4	3/8	1/2	2	1 3/4	1/4	Black
CM-4-750*	750	0.5	3 5/8	4 3/4	5 7/8	1/2	9/16	3 1/2	2 3/4	3/8	Blue
CM-4-1000*	1000	0.5	3 5/8	4 3/4	5 7/8	1/2	9/16	3 1/2	2 3/4	3/8	Red
CM-4-1500*	1500	0.5	3 5/8	4 3/4	5 7/8	1/2	9/16	3 1/2	2 3/4	3/8	Green
CM-4-2200*	2200	0.5	3 5/8	4 3/4	5 7/8	1/2	9/16	3 1/2	2 3/4	3/8	Black

* CM-3 and CM-4 Series have rectangular base